

The GABLES on 7th

IN THE HEART OF DOWNTOWN
ST. PETERSBURG, FLORIDA

The Landmark

3,110 Total A/C sq ft

First Floor Living 1,512 sq ft

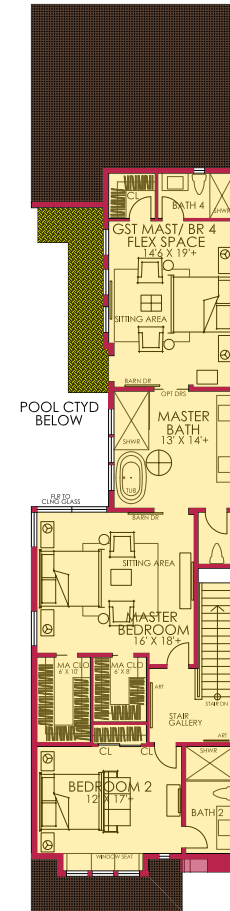
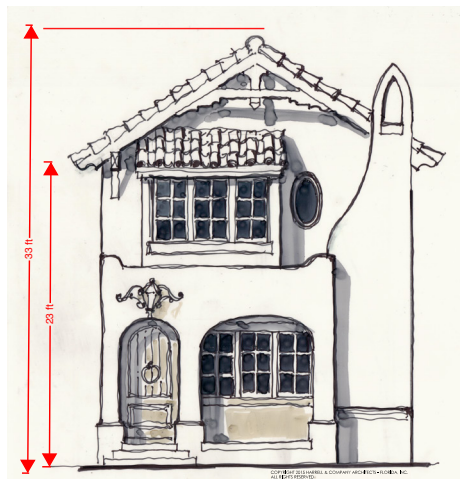
Second Floor Living 1,598 sq ft

Total A/C Living Area 3,110 sq ft

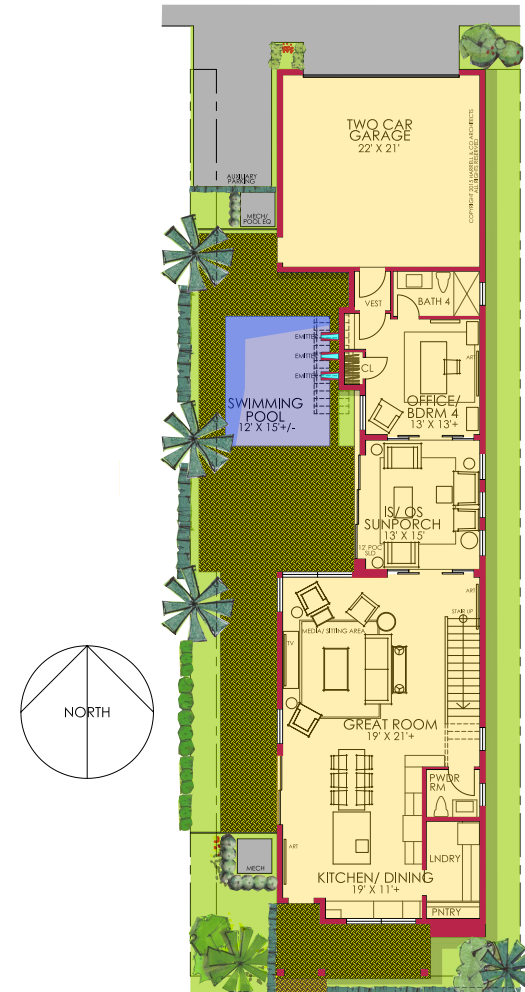
Garage 553 sq ft

Covered Exterior 115 sq ft

Total Under Roof 3,778 sq ft



Second Floor Plan



Ground Floor/Site Plan

www.GablesOn7th.com

Email: info@GablesOn7th.com

Plans, elevations, specifications, features, colors, design, dimensions and materials are all subject to availability and to change or substitution at any time and without further notice. Please consult your sales representatives and refer to the Agreement in order to determine which features, specifications and elevations are included in any unit you may purchase.